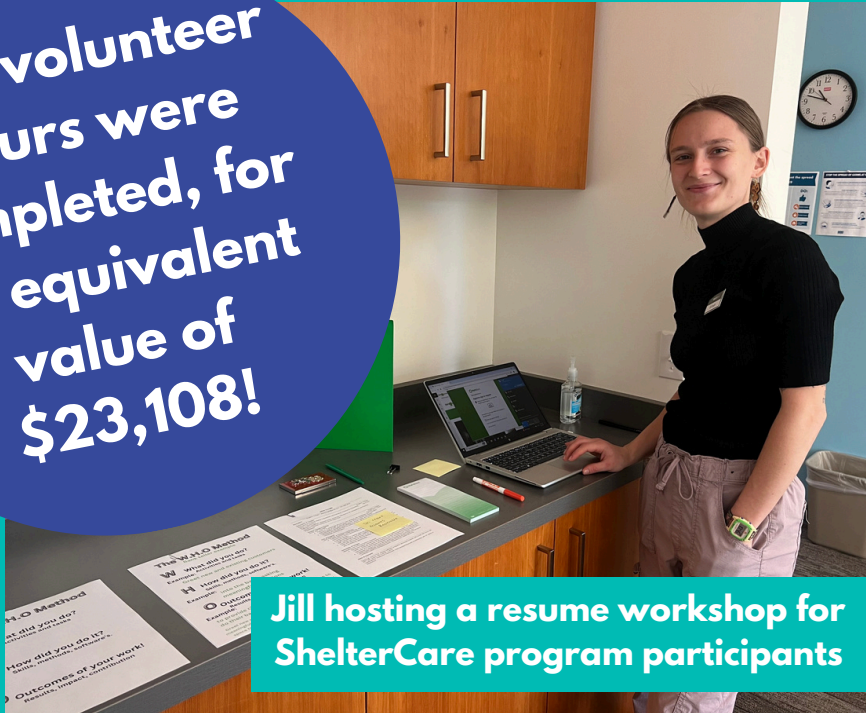


This year, we launched our volunteer program!

690 volunteer hours were completed, for an equivalent value of \$23,108!



Jill hosting a resume workshop for ShelterCare program participants

“ShelterCare makes volunteering feel like I am helping a family member or friend. It’s not just volunteering, it is helping develop the community into a community that includes everyone.”

-Jill, Board Member

Success Story Highlight:

Shirrell & Jesse’s Story: Young Parents of Four



“We could find motel rooms consistently, but that took a big toll on us. We went through breakups, fights, arguments, losing our kids. I don’t feel like people should have to go through that.”

-Jesse, ShelterCare Program Participant

After losing their kids for six months, Shirrell and Jesse were connected to our SPRF (Strengthening, Preserving, and Reunifying Families) program and were able to move into an emergency shelter with their kids. SPRF works directly with DHS to provide assistance in locating safe and affordable housing, to keep families who are at risk of homelessness together.

Program Numbers:

This year, ShelterCare's 101 staff members moved 771 people forward on their journey toward stable housing and independence.



Our Homeless Prevention and Rehousing program helped 202 children and adults overcome homelessness or avoid eviction.



Our Permanent Supported Housing program provided specialized housing and support services to 276 adults living with mental illness.



Our Behavioral Health program supported 117 adults on their journey towards recovery, stability, and independence.



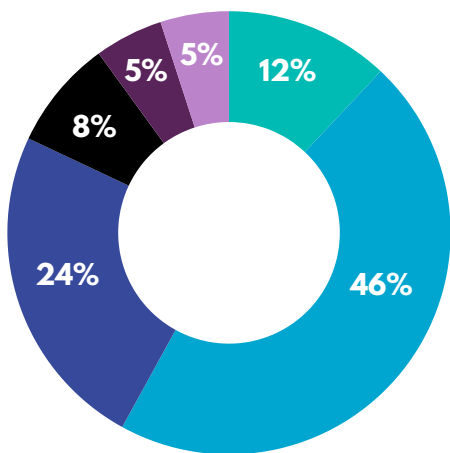
Short-Term Housing provided 140 chronically homeless individuals with emergency and transitional shelter as they recovered from medical and mental health conditions.



The Birch program diverted 36 individuals with serious mental health needs from jails and the Oregon State Hospital.

2022 - 2023 Financials:

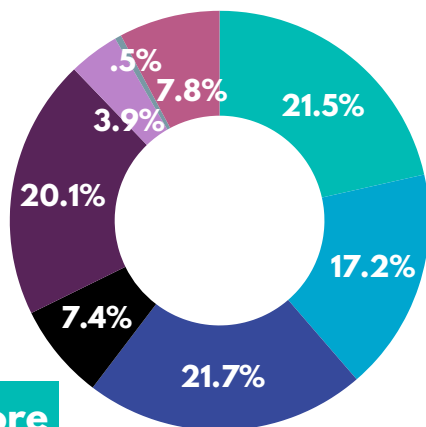
TOTAL REVENUE: \$7,178,351



- Program Revenue - \$871,211
- State & Local Assistance - \$3,287,590
- Federal Assistance - \$1,756,402
- Donations - \$551,333
- Program Fee - \$347,324
- Other - \$363,491

Annual report numbers are from our most recent audited financials. Audited financials for 2023 - 2024 will be available spring of 2025.

TOTAL EXPENSES: \$7,462,996



- Permanent Supportive Housing - \$1,606,878
- Bridge Housing - \$1,285,732
- Administration - \$1,615,839
- Behavioral Health - \$550,905
- Emergency Housing & Prevention - \$1,496,546
- Fundraising - \$289,486
- Property Management - \$37,259
- Transitional Shelter & Case Management - \$580,351



ShelterCare
Hope is here.

Donate or learn more
at sheltercare.org